

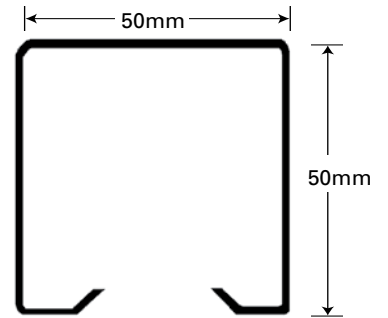


# LIGHTING TRUNKING



# LIGHTING TRUNKING

## Clip-lid Lighting Trunking

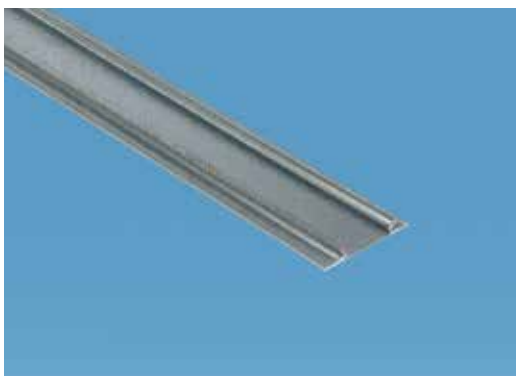


Product Code **LT/22**

		Code Suffix
<b>BRITISH STANDARD</b>	Complies with BS EN 50085	
<b>STANDARD LENGTH</b>	5.0 metres	
<b>FULL TECHNICAL SUBMITTAL AVAILABLE ON REQUEST</b>		
<b>STANDARD FINISH</b>	Hot-Dip Pre-Galvanised to BS EN 10346	<b>/G</b>
<b>SPECIAL FINISH</b>	Epoxy Powder Coated White	<b>/EP</b>

## Clip-lid Cover

All lids supplied in 4m lengths



Product Code  
**LSL/2/G**

Galvanised Steel



Product Code  
**LPL/2/PVC**

White PVC

## Accessories



**LB1/22**  
90° Flat Bend



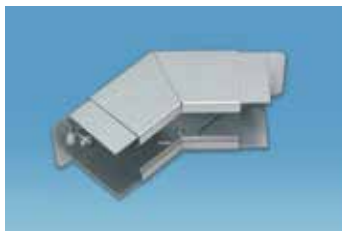
**LB2/22**  
90° Inside Bend



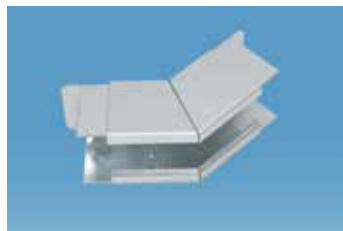
**LB3/22**  
90° Outside Bend



**LH1/22**  
45° Flat Bend



**LH2/22**  
45° Inside Bend



**LH3/22**  
45° Outside Bend



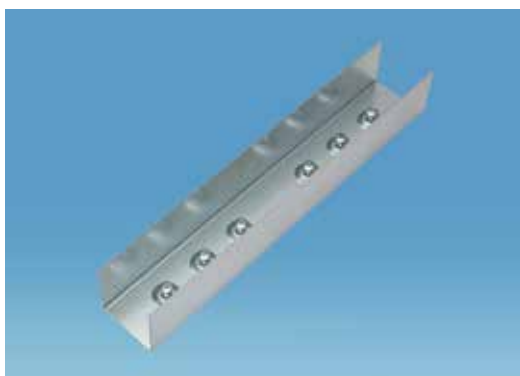
**LT1/22**  
Flat Tee



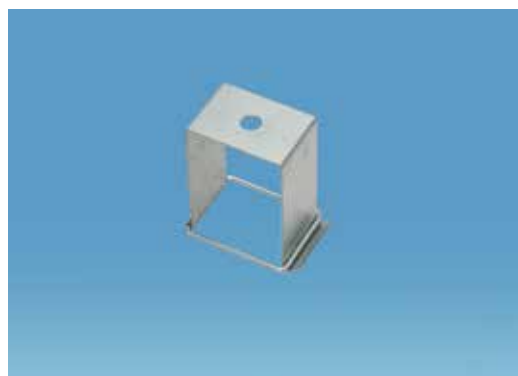
**LX/22**  
4-Way Crosspiece



**LSE/22**  
Stop End



**LLC/22**  
Coupler (300mm long)

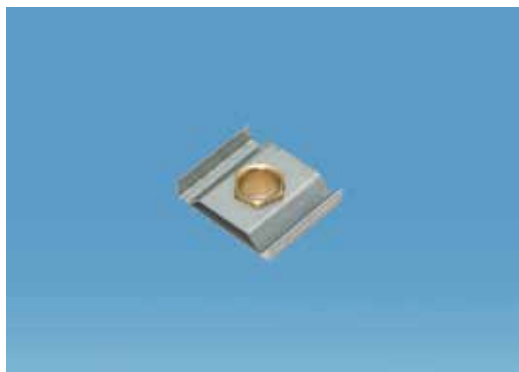


**LSB10/22**  
Hanger Bracket  
with 11mm diameter hole

**LSB20/22**  
Hanger Bracket  
with 20mm diameter hole

# LIGHTING TRUNKING

## Accessories



**LLS100**  
Lighting Fitting Suspension Unit



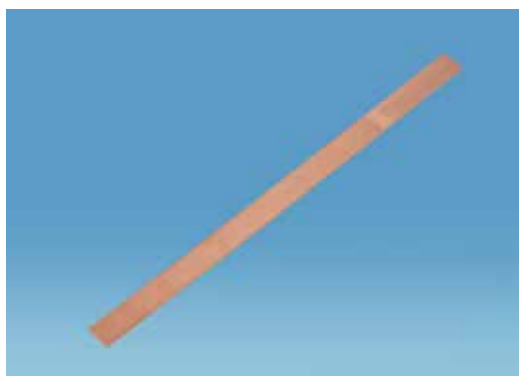
**LFC/22**  
Flanged Connector



**LBC/22**  
Beam Clamp



**KLK/100**  
KLIK Socket Adaptor



**LEL100**  
Earth Strap (positions under coupler)



**LCR/2**  
Cable Retainer

## Spares



**LFX100**  
M5 x 8 Fixing Screws